

TECHNICAL MANUAL

**ORGANIZATIONAL DIRECT SUPPORT, AND
GENERAL SUPPORT MAINTENANCE REPAIR
PARTS AND SPECIAL TOOLS LISTS
(INCLUDING DEPOT MAINTENANCE REPAIR
PARTS AND SPECIAL TOOLS)
FOR
POWER DISTRIBUTOR/
INTERCONNECTING GROUP
ON-224/T**

HEADQUARTERS, DEPARTMENT OF THE ARMY

1 JUNE 1983

TECHNICAL MANUAL }
 No. 11-6110-249-24P }

HEADQUARTERS
 DEPARTMENT OF THE ARMY,
 WASHINGTON, DC, 1 June 1983

ORGANIZATIONAL DIRECT SUPPORT, AND GENERAL SUPPORT

MAINTENANCE REPAIR PARTS AND SPECIAL TOOLS LISTS

(INCLUDING DEPOT MAINTENANCE REPAIR PARTS

AND SPECIAL TOOLS)

FOR

POWER DISTRIBUTOR/INTERCONNECTING GROUP

ON-224/1

Current as of 14 February 1983

REPORTING ERRORS AND RECOMMENDING IMPROVEMENTS

You can help improve this manual. If you find any mistakes or if you know of a way to improve the procedures, please let us know. Mail your letter, DA Form 2028 (Recommended Changes to Publications and Blank Forms), or DA Form 20282 located in the back of this manual direct to: Commander, US Army Communications-Electronics Command and Fort Monmouth, ATTN: DRSEL-ME-MP, Fort Monmouth, NJ 07703. In either case, a reply will be furnished direct to you.

Table of Contents

SECTION	I.	Introduction	Page	Illus Figure
	II.	Repair Parts List	5	
GROUP	00	Power Distribution/Interconnecting Group	5	1
	01	Power Switchboard SB-4093/T	7	2
		0101 Control Cubicle Assembly	9	3
		010101 Control Panel Assembly (See next higher assembly)		
		010102 Circuit Card Assembly AI (See next higher assembly)		
		01010201 Resistor Board Assembly	11	4
		01010202 Diode Board Assembly	11	4
		010103 Control Panel Lid Assembly (See Group 0101)		
		0102 Power Control Assembly	15	5
		010201 Wiring Harness (See next higher assembly)		
		010202 Load Protection Transformer CT1-CT-4 (See next higher assembly)		
		010203 Instrumentation Transformer CT5 (See next higher assembly)		
		010204 Neutral Bus Assembly	17	6
		010205 Contactor Assembly K1-K10 (See Group 0102)		

		Page	Illus Figure
GROUP	010206 Relay Assembly K11	19	7
	0103 Commercial Power Terminal Assembly	21	8
	0104 Connector J1-J8.....	23	9
02	Motor Assembly and Chain	25	10
	0201 Chain (See next higher assembly)		
	0202 Motor Assembly (See next higher assembly)		
03	Motor Assembly and Chain (See Group 02)		
	0301 Chain (See Group 02)		
	0302 Motor Assembly (See Group 02)		
04	Cable Reel Control Assembly	27	11
	0401 DC Power Cable Assembly (See next higher assembly)		
05	Power Input Cable Assembly	29	12
06	Plate and Connector Assembly	31	13
07	Sling Assembly (See Group 00)		
SECTION	III. Special Tools List (Not applicable)		
	IV. National Stock Number and Part Number Index	32	

**SECTION I
INTRODUCTION**

1. Scope

This manual lists spares and repair parts; special tools; special test, measurement, and diagnostic equipment (TMDE), and other special support equipment required for performance of organizational, direct support, and general support maintenance of the ON-244/T. It authorizes the requisitioning and issue of spares and repair parts as indicated by the source and maintenance codes.

2. General

This Repair Parts and Special Tools List is divided into the following sections:

a. Section II. Repair Parts List. A list of spares and repair parts authorized for use in the performance of maintenance. The list also includes parts which must be removed for replacement of the authorized parts. Parts lists are composed of functional groups in numeric sequence, with the parts in each group listed in figure and item number sequence.

b. Section III. Special Tools List. Not applicable.

c. Section IV. National Stock Number and Part Number Index. A list, in National item identification number (NIIN) sequence, of all National stock numbers (NSN) appearing in the listings, followed by a list, in alphameric sequence, of all part numbers appearing in the listings. National stock numbers and part numbers are cross-referenced to each illustration figure and item number appearance.

3. Explanation of Columns

a. Illustration This column is divided as follows:

(1) *Figure number.* Indicates the figure number of the illustration on which the item is shown.

(2) *Item number.* The number used to identify item called out in the illustration.

b. Source, Maintenance, and Recoverability (SMR) Codes.

(1) *Source code.* Source codes indicate the manner of acquiring support items for maintenance, repair, or overhaul of end items. Source codes are entered in the first and second positions of the Uniform SMR Code format as follows:

<i>Code</i>	<i>Definition</i>
-------------	-------------------

PA - Item procured and stocked for anticipated or known usage.

<i>Code</i>	<i>Definition</i>
PE	Support equipment procured and stocked for initial issue or outfitting to specified maintenance repair activities.
XB	Item is not procured or stocked. If not available through salvage, requisition.

NOTE

Cannibalization or salvage may be used as a source of supply for any items source coded above except those coded XA and aircraft support item as restricted by AR 750-1.

(2) *Maintenance code.* Maintenance codes are assigned to indicate the levels of maintenance authorized to USE and REPAIR support items. The maintenance codes are entered in the third and fourth positions of the Uniform SMR Code format as follows:

(a) The maintenance code entered in the third position will indicate the lowest maintenance level authorized to remove, replace, and use the support item. The maintenance code entered in the third position will indicate one of the following levels of maintenance:

<i>Code</i>	<i>Application/Explanation</i>
O	Support item is removed, replaced, used at the organizational level.
F	Support item is removed, replaced, used at the direct support level.

(b) The maintenance code entered in the fourth positions indicates whether the item is to be repaired and identifies the lowest maintenance level with the capability to perform complete repair (i.e., all authorized maintenance functions). This position will contain one of the following maintenance codes:

<i>Code</i>	<i>Application/Explanation</i>
F	The lowest maintenance level capable of complete repair of the support item is the direct support level.

Z - Nonreparable. No repair is authorized.

(3) *Recoverability code.* Recoverability codes are assigned to support items to indicate the disposition action on unserviceable items. The recoverability code is entered in the fifth position of the Uniform SMR Code format as follows:

Recoverability codes *Definition*

Z - Nonreparable item. When unserviceable, condemn and dispose at the level indicated in position 3.

F - Repairable item. When uneconomically repairable, condemn and dispose at the direct support level.

c. *National Stock Number.* Indicates the National stock number assigned to the item and will be used for requisitioning purposes.

d *Federal Supply Code for Manufacturer (FSCM).* The FSCM is a 5-digit numeric code listed in SB 708-41/42 which is used to identify the manufacturer, distributor, or Government agency, etc.

e. *Part Number.* Indicates the primary number used by the manufacturer (individual, company, firm, corporation, or Government activity), which controls the design and characteristics of the item by means of its engineering drawings, specifications, standards, and inspection requirements to identify an item or range of items.

NOTE

When a stock numbered item is requisitioned, the repair part received may have a different part number than the part being replaced.

f. *Description.* Indicates the Federal item name and, if required, a minimum description to identify the item.

g. *Unit of Measure (U/M).* *Indicates the standard of the* basic quantity of the listed item as used in performing the actual maintenance function. This measure is expressed by a two-character alphabetical abbreviation (e.g., ea, in, pr, etc). When the unit of measure differs from the unit of issue, the lowest unit of issue that will satisfy the required units of measure will be requisitioned.

h. *Quantity Incorporated in Unit.* Indicates the quantity of the item used in the breakout shown on the illustration figure, which is prepared for a functional group, subfunctional group, or an assembly.

4. Special Information

a. The following publication pertains to the ON-224/T and its components: TM 11-6110-249-14, Power Distributor/ Interconnecting Group, Trailer Mounted, ON-224/ T. (To be published).

b. National stock numbers (NSN's) that are missing from P source coded items have been applied for and will be added to this TM by future change/revision when they are entered in the Army Master Data File (AMDF). Until the NSN's are established and published, submit exception requisitions to: Commander, US Army Communications-Electronics Command and Fort Monmouth, ATTN: DRSEL-MM, Fort Monmouth, NJ 07703 for the part required to support your equipment.

5. How to Locate Repair Parts

a. When National stock number or part number is unknown.

(1) *First.* Using the table of contents, determine the functional group within which the item belongs. This is necessary since illustrations are prepared for functional groups and listings are divided into the same groups.

(2) *Second* Find the illustration covering the functional group to which the item belongs.

(3) *Third* Identify the item on the illustration and note the illustration figure and item number of the item.

(4) *Fourth.* Using the Repair Parts Listing, find the figure and item number noted on the illustration.

b. When National stock number or part number is known.

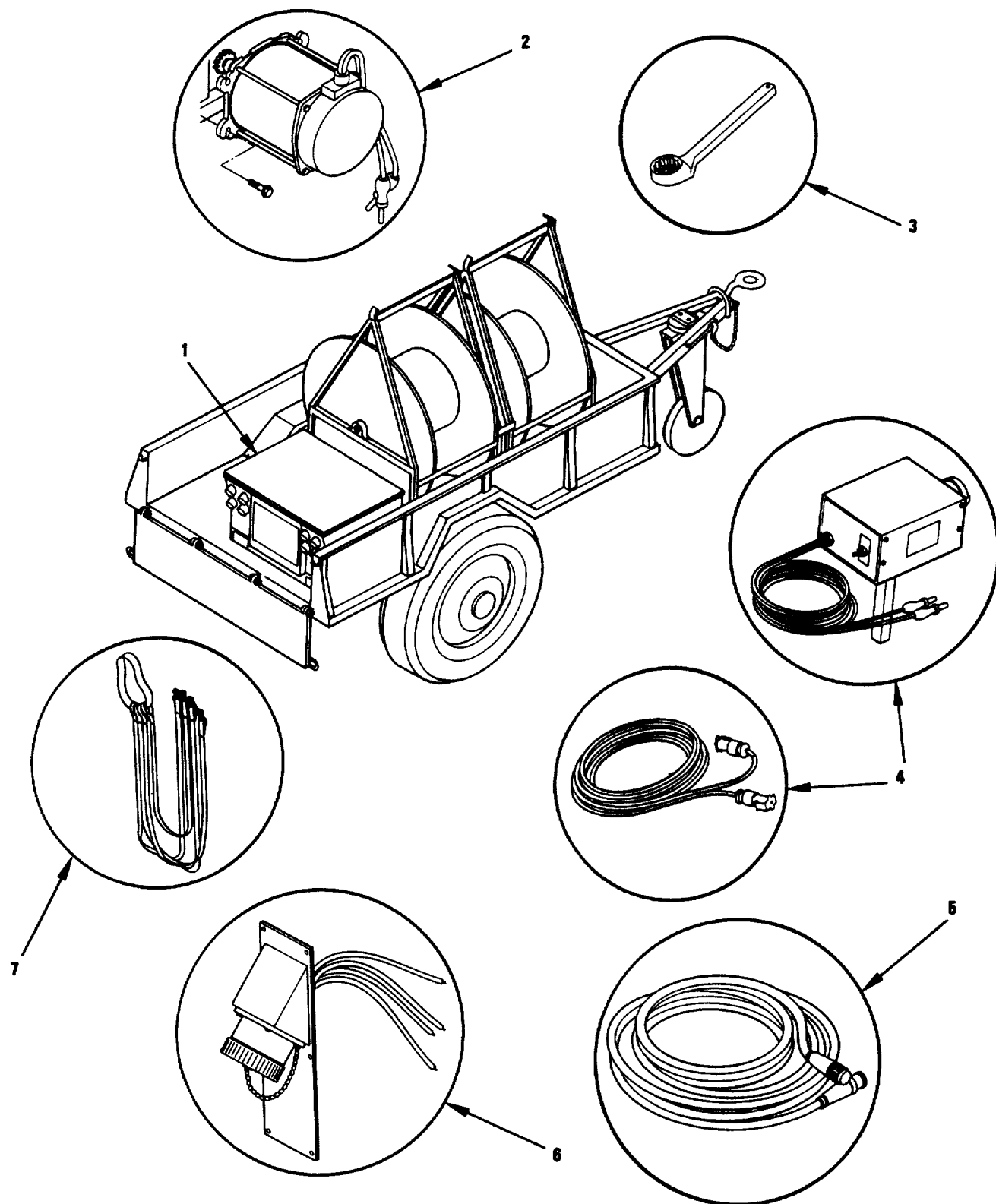
(1) *First.* Using the index of National Stock Numbers and Part Numbers, find the pertinent National stock number or part number. This index is in NIIN sequence followed by a list of part numbers in alphameric sequence, cross-referenced to the illustration figure number and item number.

(2) *Second* After finding the figure and item number, locate the figure and item number in the repair parts list.

6. Abbreviations

Not applicable.

(Next printed page is 4)

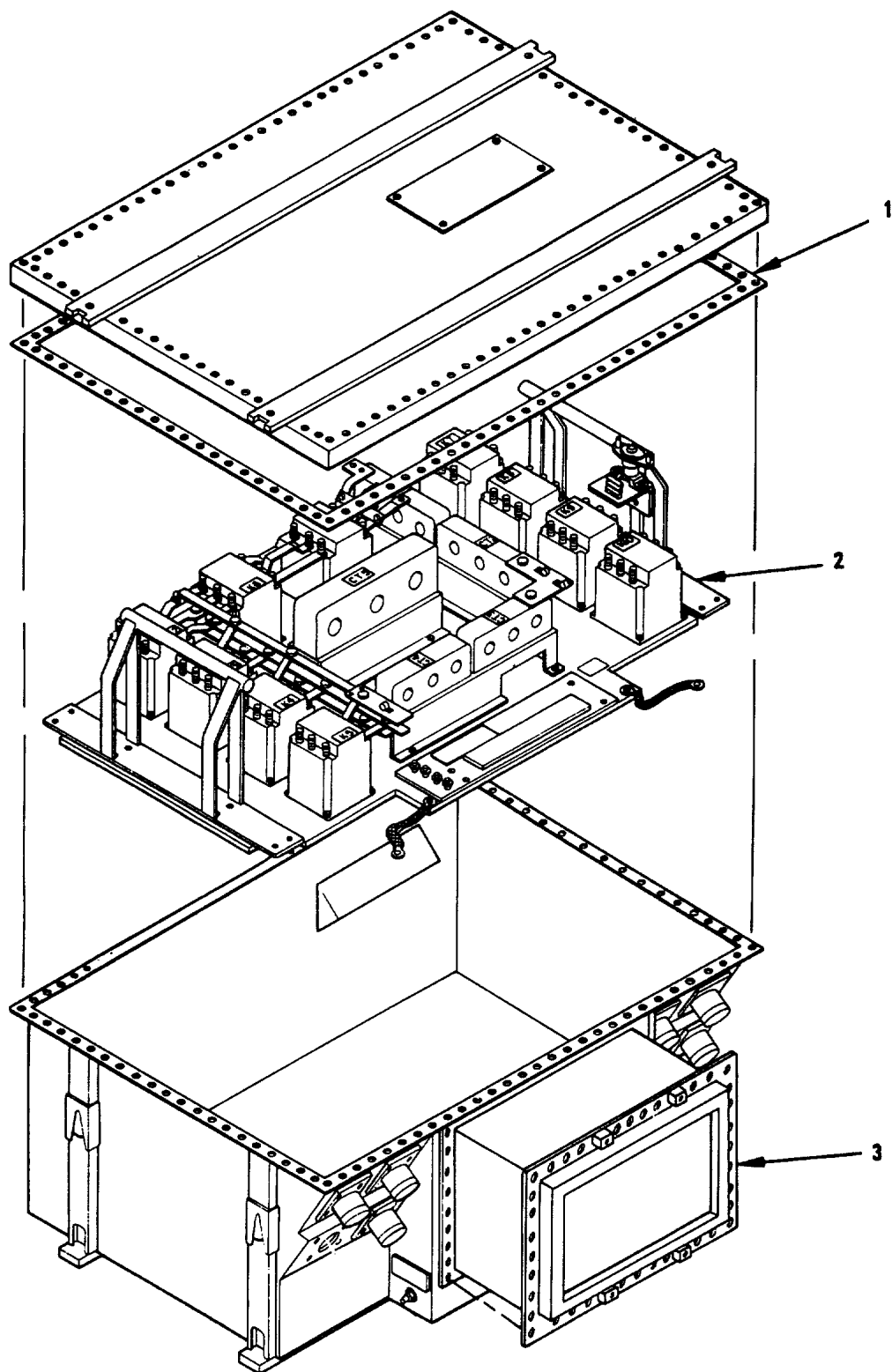


EL8VZ001

Figure 1. Power Distribution/Interconnecting Group ON-224/T.

SECTION II

(1) ILLUSTRATION		(2)	(3)	(4)	(5)	(6)	(7)	(8)
(a) FIG NO.	(b) ITEM NO.	SMR CODE	FEDERAL STOCK NUMBER	FSCM	PART NUMBER	DESCRIPTION <i>USABLE ON CODE</i>	U/M	QTY INC IN UNIT
						GROUP 00 POWER DISTRIBUTION INTERCONNECTING GROUP, ON-224/T		
1	1	XBFFF		80063	B4030209	POWER SWITCHBOARD	EA	1
1	2	PAFFF	4210-00-978-2010	92858	P56SX006	MOTOR ASSEMBLY	EA	1
1	3	PBOFF	5120-00-808-5006	12670	6004W0000	WRENCH, GENERATOR	EA	1
1	4	XBFFF		80063	B4030261	ASSY CABLE REEL CON.....	EA	1
1	5	XBFZZ		80063	B4030206	INPUT POWER CABLE ASSEMBLY	EA	1
1	6	XBFFF		80063	B4030269	ASSY PLATE AND CON.....	EA	1
1	7	XBFZZ		01276	FE300140-01	SLING, 4-LEG	EA	1



EL8VZ002

Figure 2. Power Switchboard SB-4093/T.

(1) ILLUSTRATION		(2)	(3)	(4)	(5)	(6)	(7)	(8)
(a) FIG NO.	(b) ITEM NO.	SMR CODE	FEDERAL STOCK NUMBER	FSCM	PART NUMBER	DESCRIPTION <i>USABLE ON CODE</i>	U/M	QTY INC IN UNIT
						GROUP 01 POWER SWITCH BOARD SB-4093/T		
2	1	XBFZZ		81567	50.062X36.000LG	GASKET HOUSING COV	EA	1
2	2	XBFFF		80063	B4030214	ASSY POWER CONTROL	EA	1
2	3	XBFFF		80063	B4030210	CONTROL ASSY CUB	EA	1

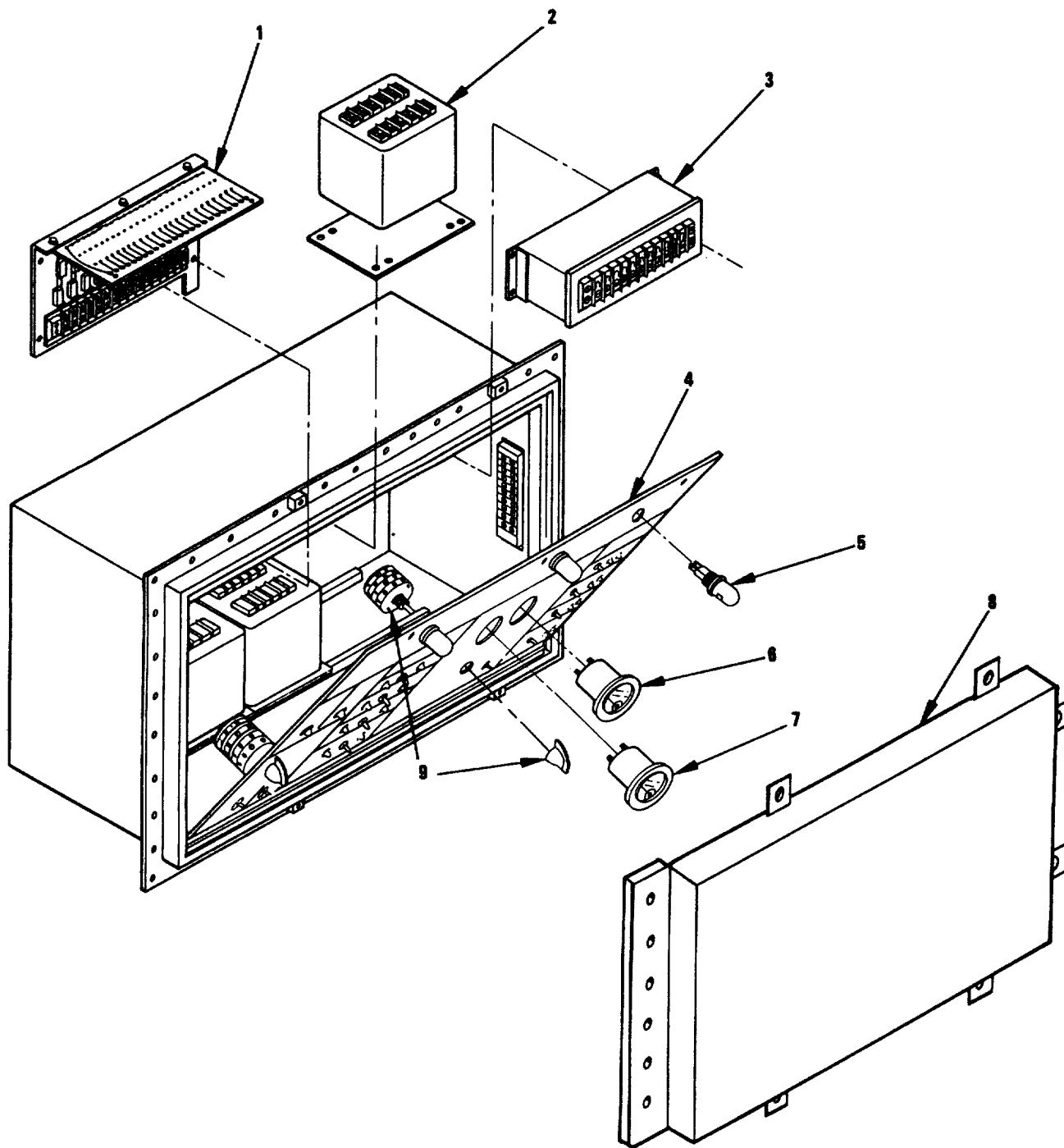
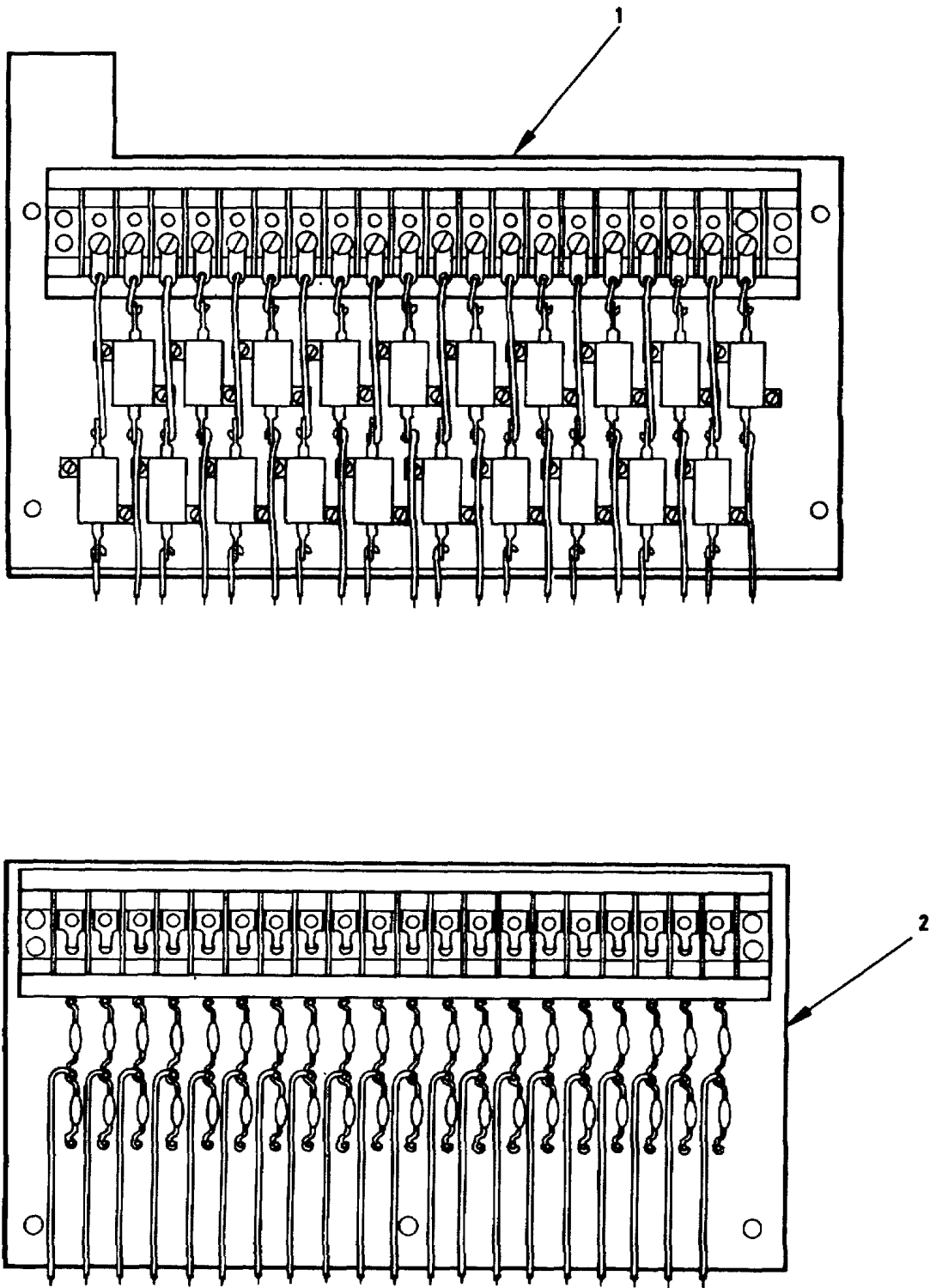


Figure 3. Control Cubicle Assembly.

(1) ILLUSTRATION		(2)	(3)	(4)	(5)	(6)	(7)	(8)
(a) FIG NO.	(b) ITEM NO.	SMR CODE	FEDERAL STOCK NUMBER	FSCM	PART NUMBER	DESCRIPTION <i>USABLE ON CODE</i>	U/M	QTY INC IN UNIT
						GROUP 0101 CONTROL CUBICLE ASSEMBLY		
3	1	PAFZZ		56996	B4030212	CIRCUIT BOARD ASSY	EA	1
3	2	PAFZZ		12670	CLE-11001	RELAY SHORT	EA	4
3	3	PAFZZ		55116	SCD MOD 4331	MONITOR, PHASE	EA	1
3	4	XBFFF		80063	B4030211	CONTROL PANEL.....	EA	1
3	5	PAFZZ		71744	39F3466	INSTR LT CANED BASE	EA	3
3	6	PAFZZ		15309	266-099	AMMETER	EA	1
3	7	PAFZZ		15309	266-098	VOLTMETER.....	EA	1
3	8	XBFZZ		80063	B4030305	CONTROL PANEL LID	EA	1
3	9	PAFZZ	5930-00-809-4841	82121	31904 LT	SWITCH, ROTARY	EA	1



EL8VZ004

Figure 4. Resistor Board Assembly and Diode Board Assembly.

(1) ILLUSTRATION		(2)	(3)	(4)	(5)	(6)	(7)	(8)
(a) FIG NO.	(b) ITEM NO.	SMR CODE	FEDERAL STOCK NUMBER	FSCM	PART NUMBER	DESCRIPTION <i>USABLE ON CODE</i>	U/M	QTY INC IN UNIT
4	1	PAFZZ		56996	B4030213	GROUP 01010201 RESISTOR BOARD ASSEMBLY AND GROUP 01010202 DIODE BOARD ASSEMBLY COMPONENT BOARD	EA	2
4	2	PAFZZ		56996	B4030229	DIODE BOARD ASSY	EA	1

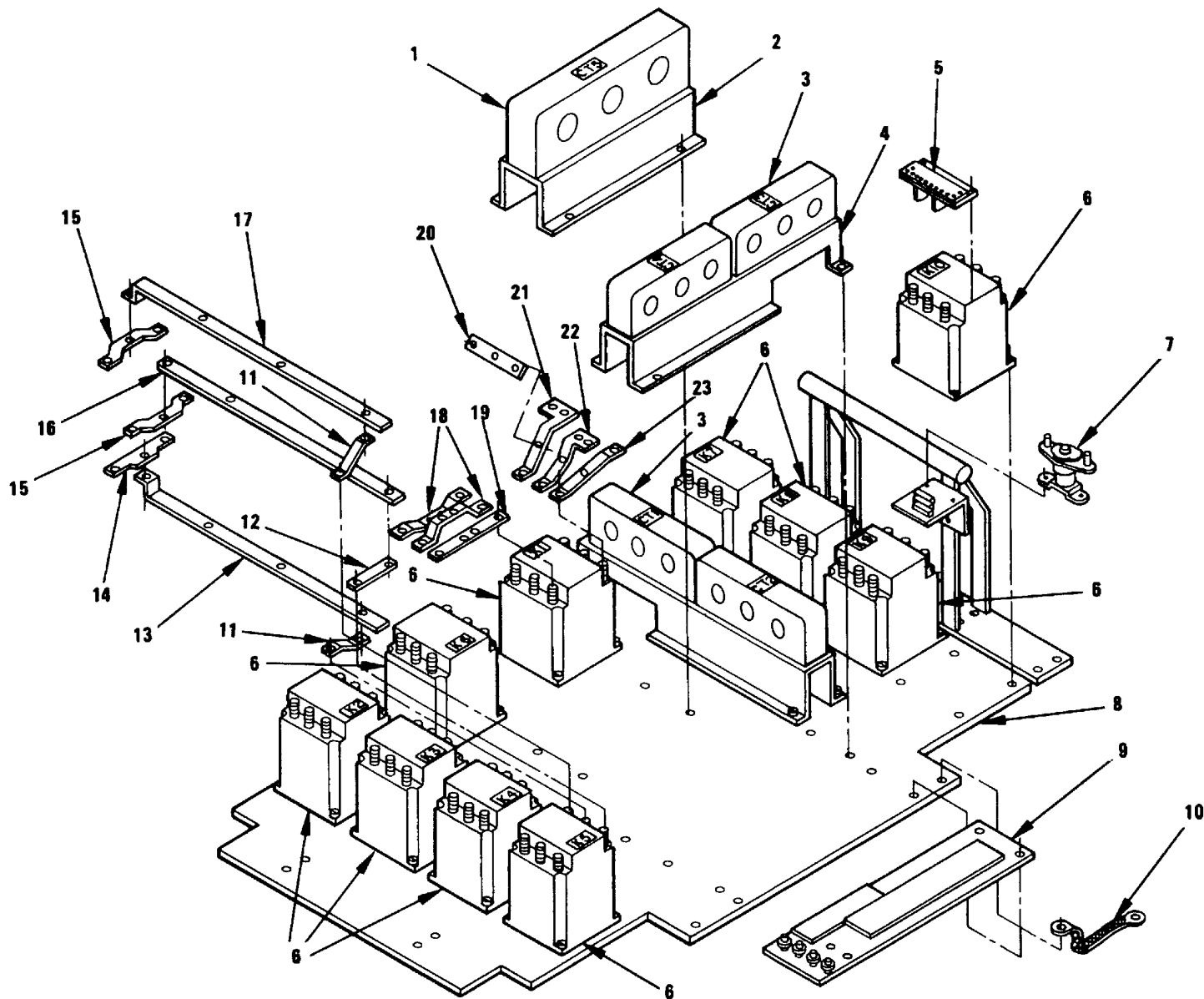


Figure 5. Power Control Assembly and Wiring Harness (Sheet 1 of 2).

EL8VZ005

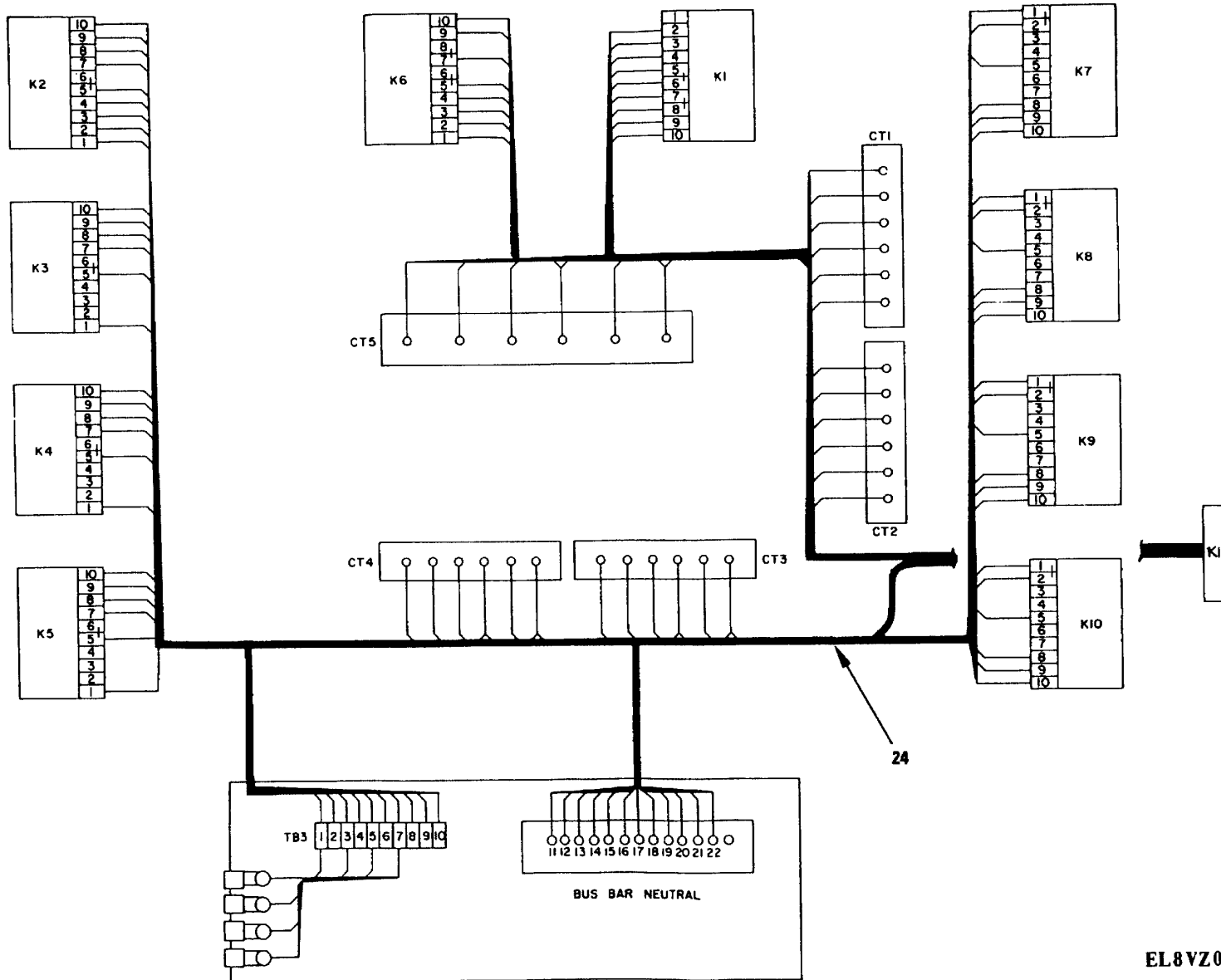
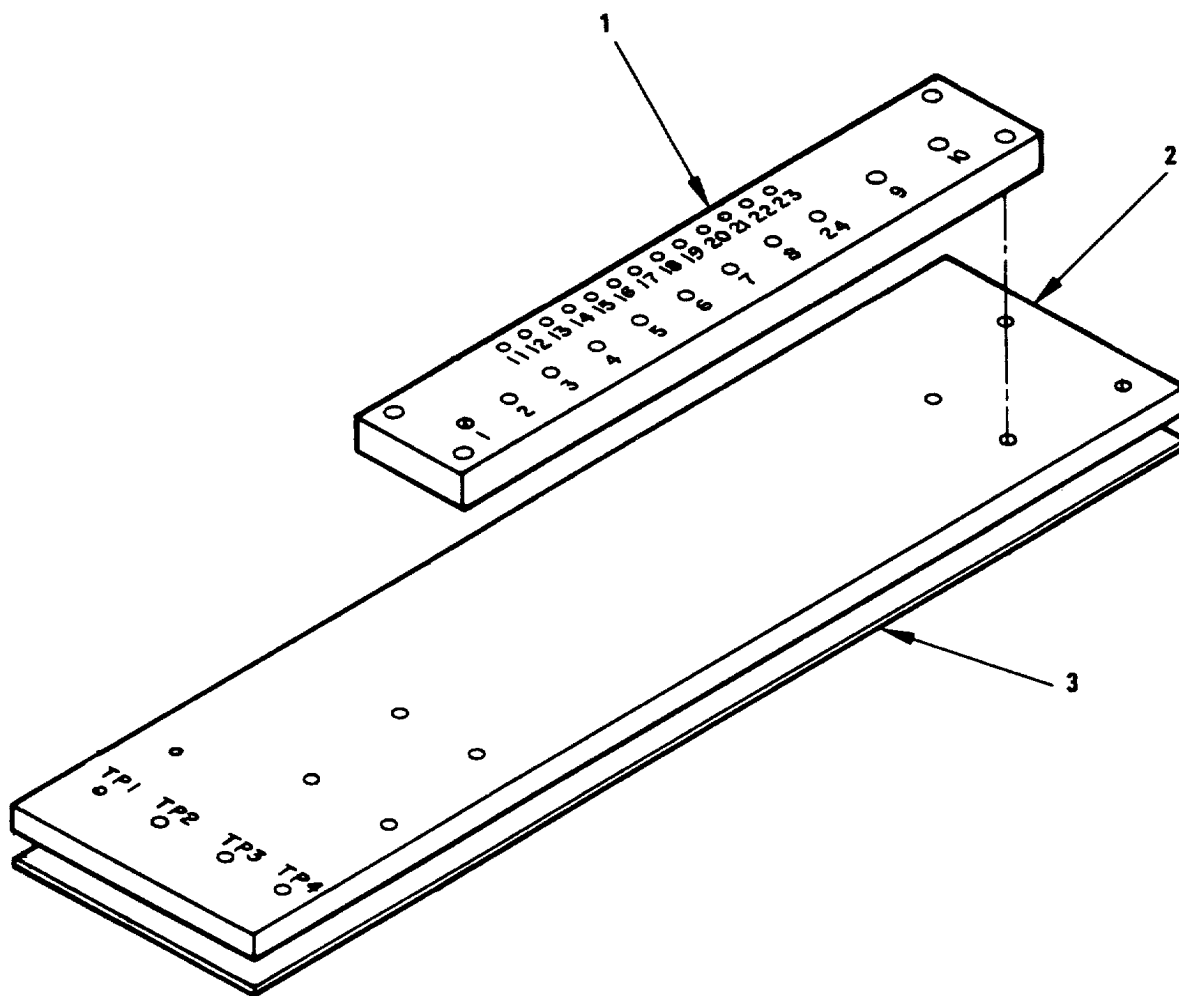


Figure 5. Power Control Assembly and Wiring Harness (Sheet 2 of 2).

EL8VZ006

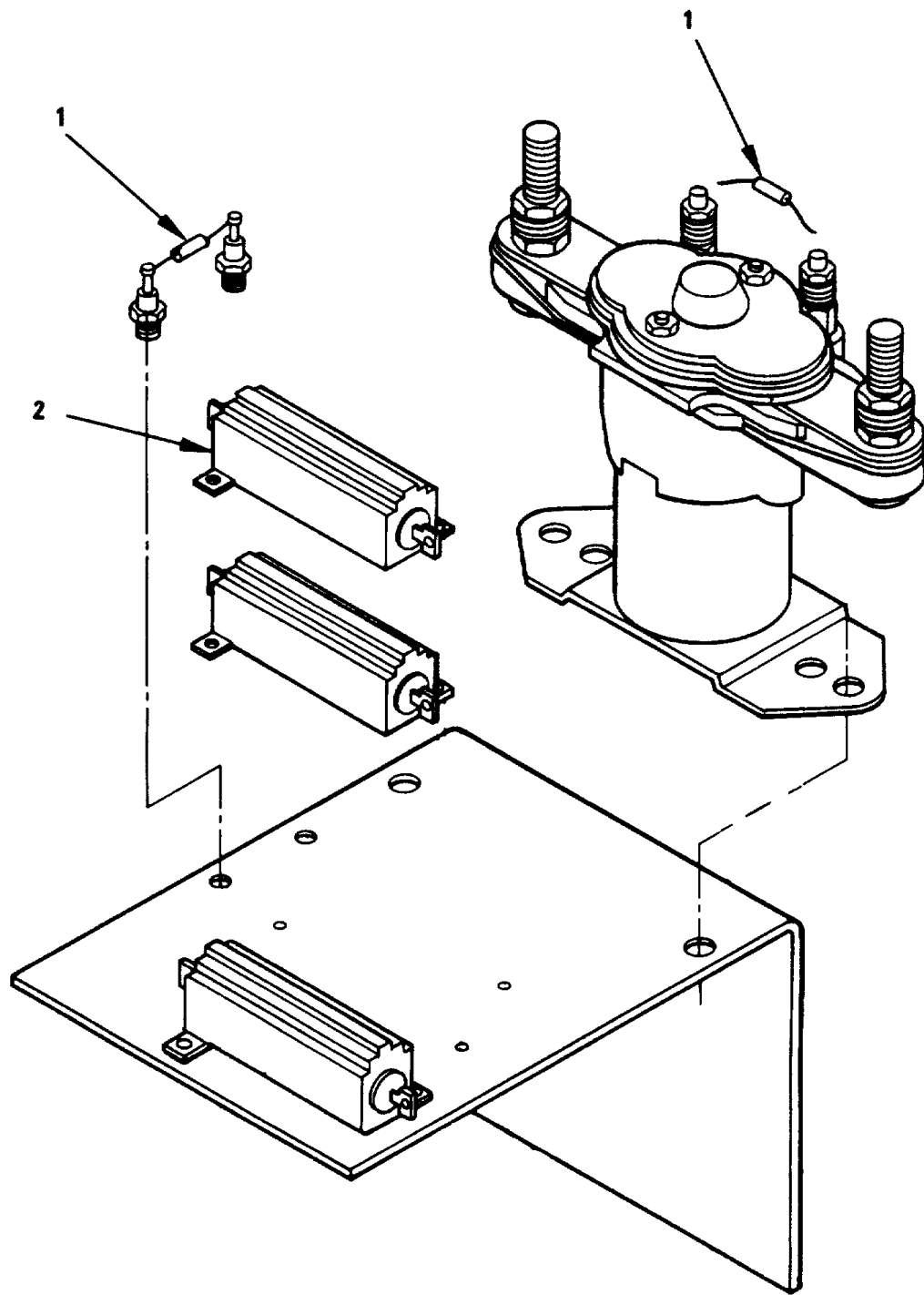
(1) ILLUSTRATION		(2)	(3)	(4)	(5)	(6)	(7)	(8)
(a) FIG NO.	(b) ITEM NO.	SMR CODE	FEDERAL STOCK NUMBER	FSCM	PART NUMBER	DESCRIPTION <i>USABLE ON CODE</i>	U/M	QTY INC IN UNIT
						GROUP 0102 POWER CONTROL ASSEMBLY AND GROUP 010201 WIRING HARNESS		
5	1	PAFZZ		12610	53A-501-001	TRANSFORMER, POWER	EA	1
5	2	XBFZZ		80063	B4030236	BRACKET-CT INSTM.....	EA	1
5	3	PAFZZ		12670	33-201-002	TRANSFORMER, POWER.....	EA	1
5	4	XBFZZ		80063	56990B4030232	BRKT-CT LOAD PROT.....	EA	2
5	5	XBFZZ		75382	40TB-XXP-10	INSULATOR.....	EA	10
5	6	PAFZZ		50603	HBR200AB	CONTACTOR 350 AMP	EA	10
5	7	PAFZZ	5945-00-660-9315	56996	B430221-01A	RELAY, ELECTROMAGNET.....	EA	1
5	8	XBFZZ		80063	B4030215	MOUNTING BASE ASSEMBLY	EA	1
5	9	XBFZZ		80063	B4030238	ASSY NEUTRAL BUS.....	EA	1
5	10	XBFZZ		80063	B4030234	GROUND STRAP	EA	2
5	11	XBFZZ		80063	B4030247	BUS BAR BO&CO K3-K5	EA	2
5	12	XBFZZ		80063	B4030246	BUS BAR-AO K3, K4, K5	EA	1
5	13	XBFZZ		80063	B4030244	BUS BAR-AO K2 TO K5	EA	1
5	14	XBFZZ		80063	B4030219	BUS BAR-BO K2 TO K6	EA	1
5	15	XBFZZ		80063	B4030220	BUS BAR AO CO K2-K6.....	EA	2
5	16	XBFZZ		80063	B4030243	BUS BAR-BO K2 TO K5	EA	1
5	17	XBFZZ		80063	B4030242	BUS BAR-CO K2 TO K5.....	EA	1
5	18	XBFZZ		80063	B4030223	BUS BAR BO CO K1-K6.....	EA	2
5	19	XBFZZ		80063	B4030222	BUS BAR AO K1 TO K6	EA	1
5	20	XBFZZ		80063	B4030228	SUPPORT BUS BAR	EA	1
5	21	XBFZZ		80063	B4030225	BUS BAR AO, K1	EA	1
5	22	XBFZZ		80063	B4030226	BUS BAR BO, K1	EA	1
5	23	XBFZZ		80063	B4030227	BUS BAR CO, K1	EA	1
5	24	PAFZZ		56996	B4030323	WIRING HARNESS.....	EA	1



EL8VZ007

Figure 6. Neutral Bus Assembly.

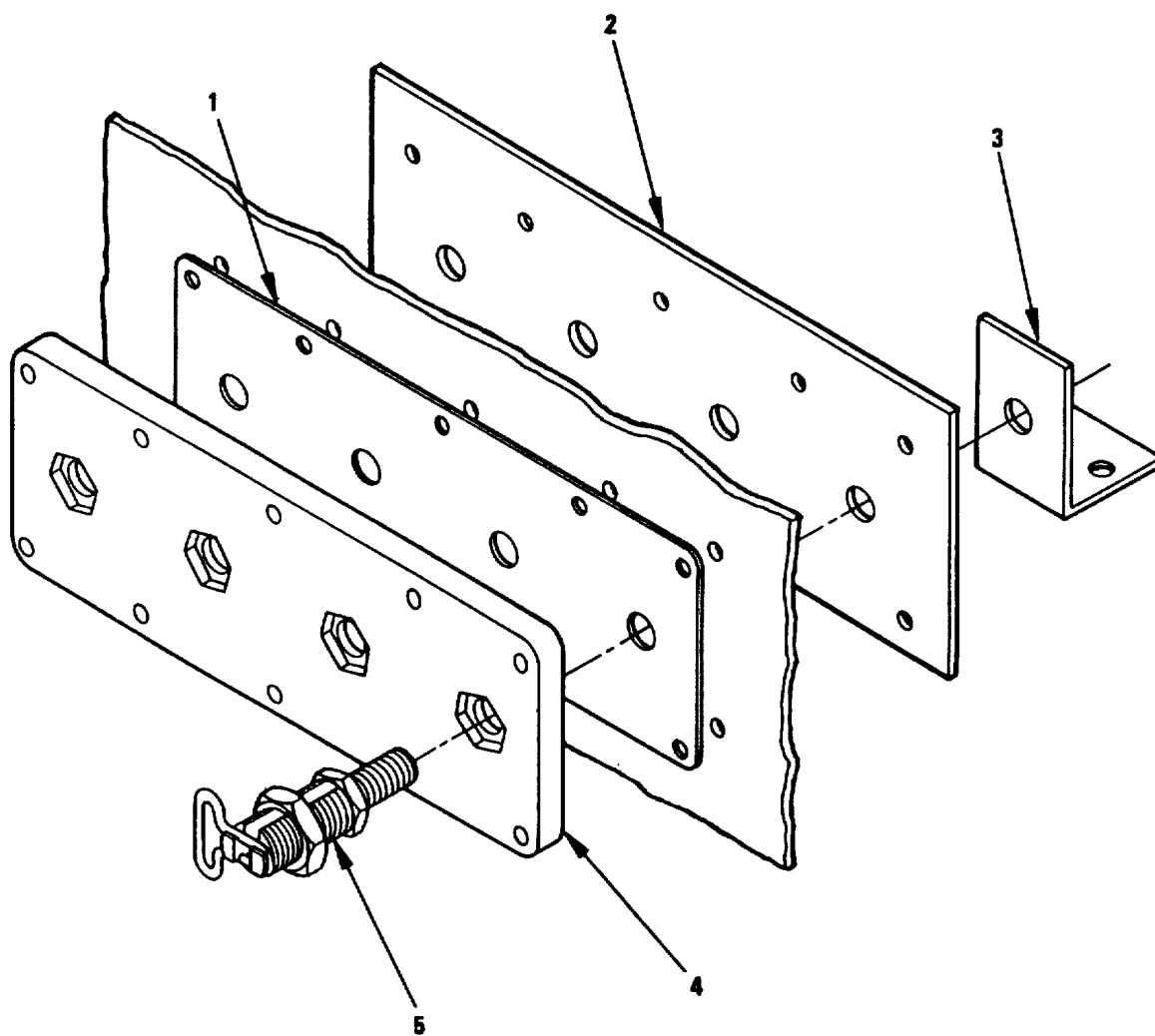
(1) ILLUSTRATION		(2)	(3)	(4)	(5)	(6)	(7)	(8)
(a) FIG NO.	(b) ITEM NO.	SMR CODE	FEDERAL STOCK NUMBER	FSCM	PART NUMBER	DESCRIPTION <i>USABLE ON CODE</i>	U/M	QTY INC IN UNIT
						GROUP 010204 NEUTRAL BUS ASSEMBLY		
6	1	XBFZZ		80063	B4030241	BUS BAR NEUTRAL.....	EA	1
6	2	XBFZZ		80063	B4030240	BUS BAR SUPPORT	EA	1
6	3	XBFZZ		80063	B4030239	BUS BAR INSULATOR.....	EA	1



EL8VZ008

Figure 7. Relay Assembly K11.

(1) ILLUSTRATION		(2)	(3)	(4)	(5)	(6)	(7)	(8)
(a) FIG NO.	(b) ITEM NO.	SMR CODE	FEDERAL STOCK NUMBER	FSCM	PART NUMBER	DESCRIPTION <i>USABLE ON CODE</i>	U/M	QTY INC IN UNIT
7	1	PAFZZ		80063	B4030331	GROUP 010206 RELAY ASSEMBLY DIODE.....	EA	2
7	2	PAFZZ		96906	MIL-18546	RESISTOR, FIXED, WIR.....	EA	1



EL8VZ009

Figure 8. Commercial Power Terminal Assembly.

(1) ILLUSTRATION		(2)	(3)	(4)	(5)	(6)	(7)	(8)
(a) FIG NO.	(b) ITEM NO.	SMR CODE	FEDERAL STOCK NUMBER	FSCM	PART NUMBER	DESCRIPTION <i>USABLE ON CODE</i>	U/M	QTY INC IN UNIT
8	1	XBFZZ		81567	50 DUROMETER .062	GROUP 0103 COMMERCIAL POWER TERMINAL ASSEMBLY GSKT COML PWR ASSY.....	EA	1
8	2	XBFZZ		80063	B4030257	INSULATOR TERMINAL.....	EA	1
8	3	XBFZZ		80063	B4030258	BUS BAR L1, L2, L3.....	EA	3
8	4	XBFZZ		12670	22997	TERM SUPPORT BOARD	EA	1
8	5	XBFZZ		12670	69-692	COML PWR TERMINAL	EA	4

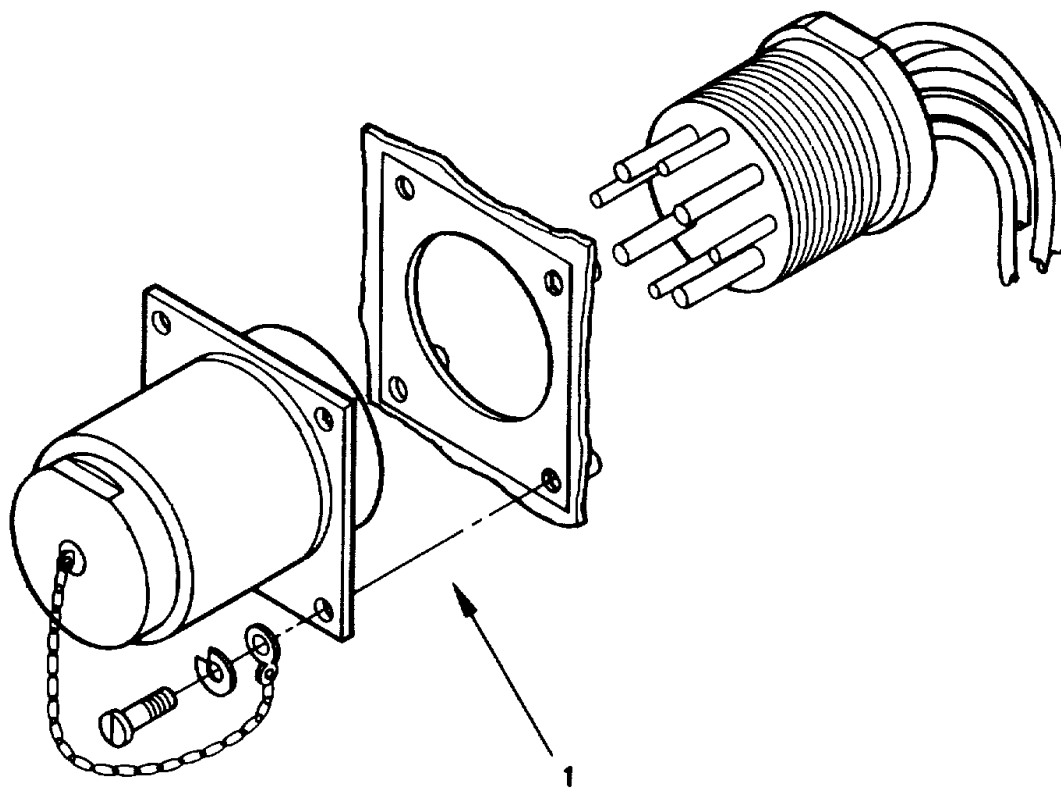
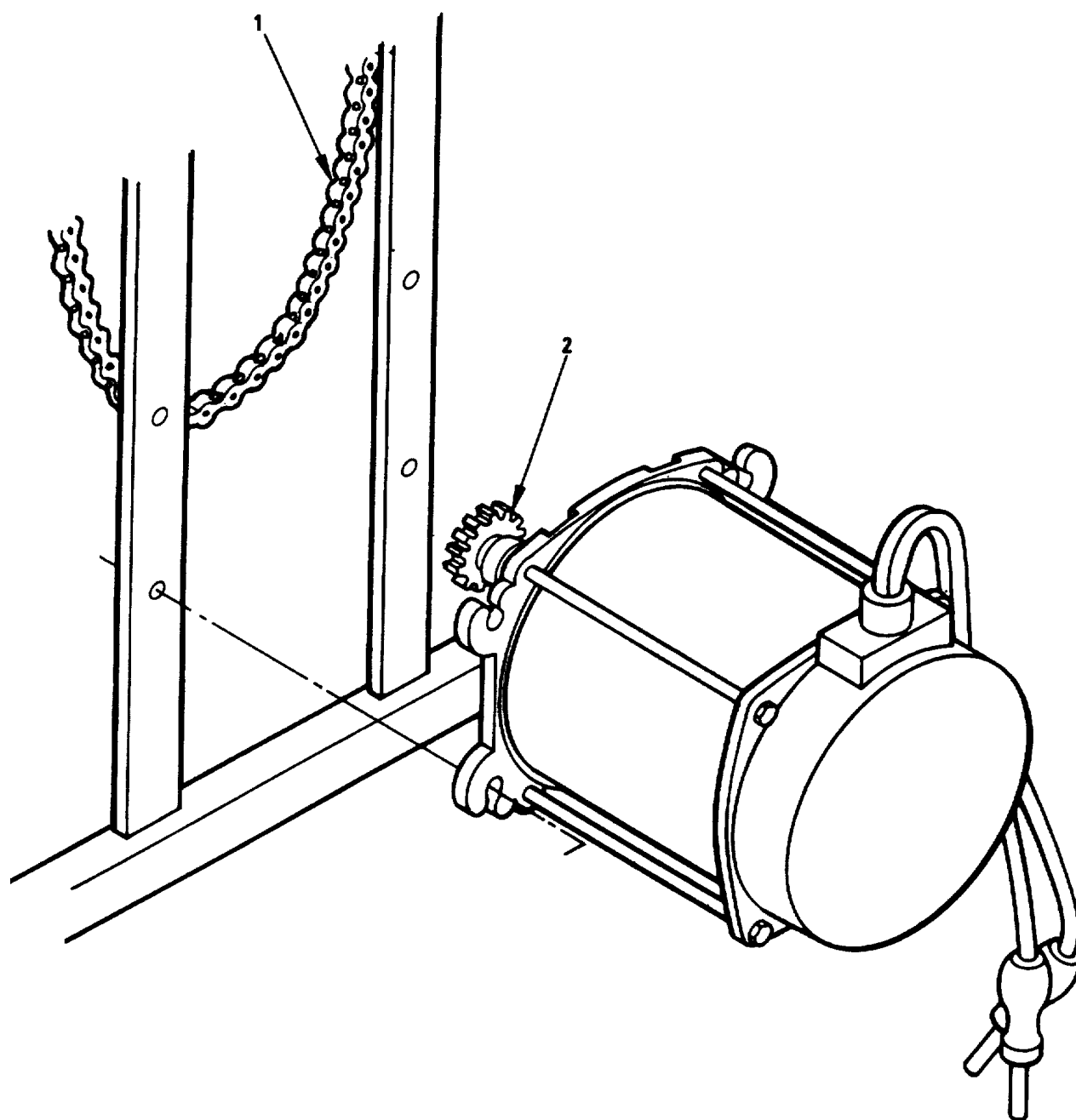


Figure 9. Connector J1-J8.

(1) ILLUSTRATION		(2)	(3)	(4)	(5)	(6)	(7)	(8)
(a) FIG NO.	(b) ITEM NO.	SMR CODE	FEDERAL STOCK NUMBER	FSCM	PART NUMBER	DESCRIPTION <i>USABLE ON CODE</i>	U/M	QTY INC IN UNIT
9	1	PAFZZ		77820	10-565303-4MP	GROUP 0104 CONVERTOR J1-J8 CONNECTOR, PLUG, ELE.....	EA	1



EL8VZ011

Figure 10. Motor Assembly and Chain.

(1) ILLUSTRATION		(2)	(3)	(4)	(5)	(6)	(7)	(8)
(a) FIG NO.	(b) ITEM NO.	SMR CODE	FEDERAL STOCK NUMBER	FSCM	PART NUMBER	DESCRIPTION <i>USABLE ON CODE</i>	U/M	QTY INC IN UNIT
10	1	XBFZZ		92850	ISO-45-7	GROUP 02 MOTOR ASSEMBLY AND CHAIN CHAIN NUMBER 35	EA	1
10	2	XBFZZ		92858	ISO-45-62	MOTOR SPROCKET	EA	1

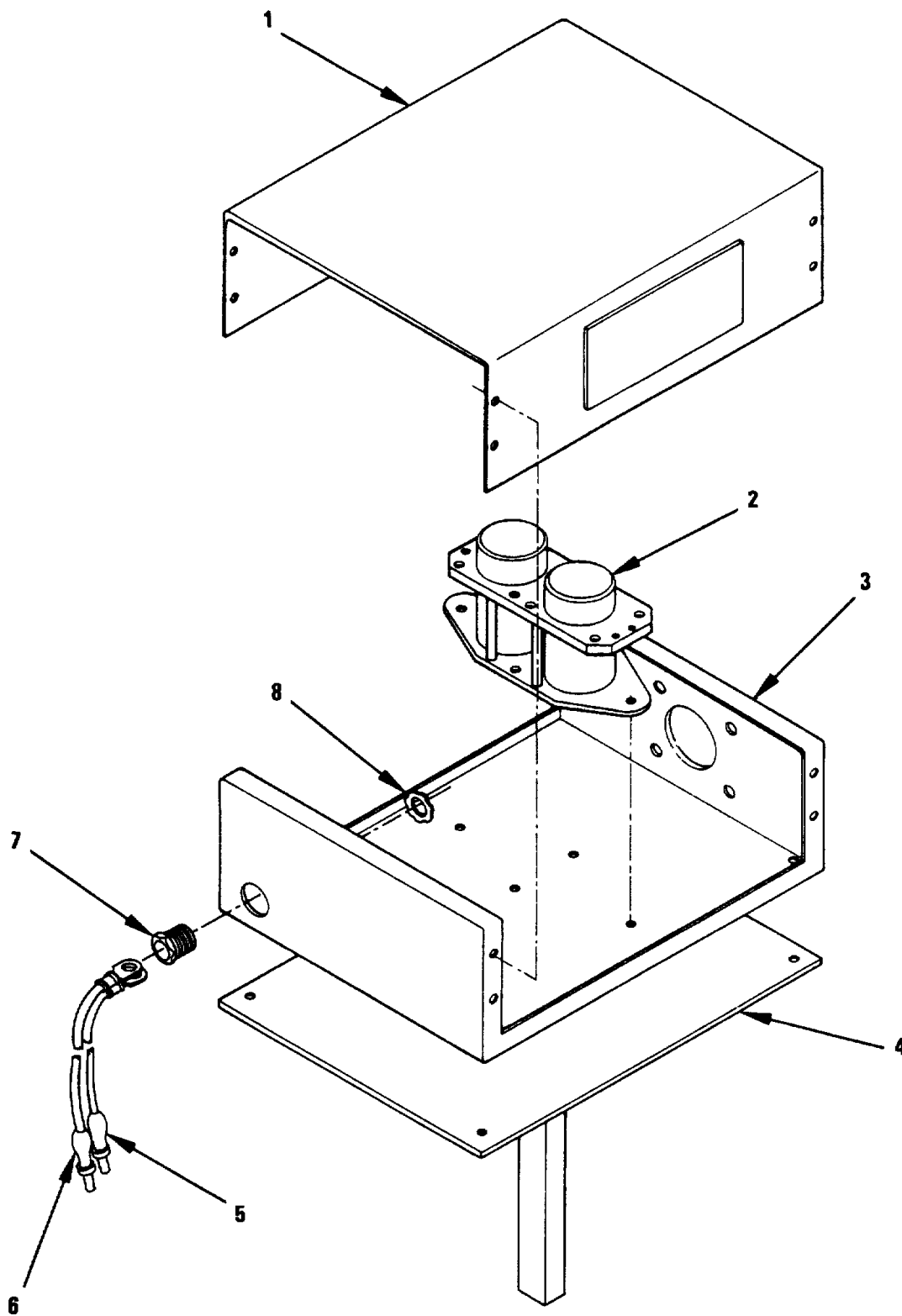
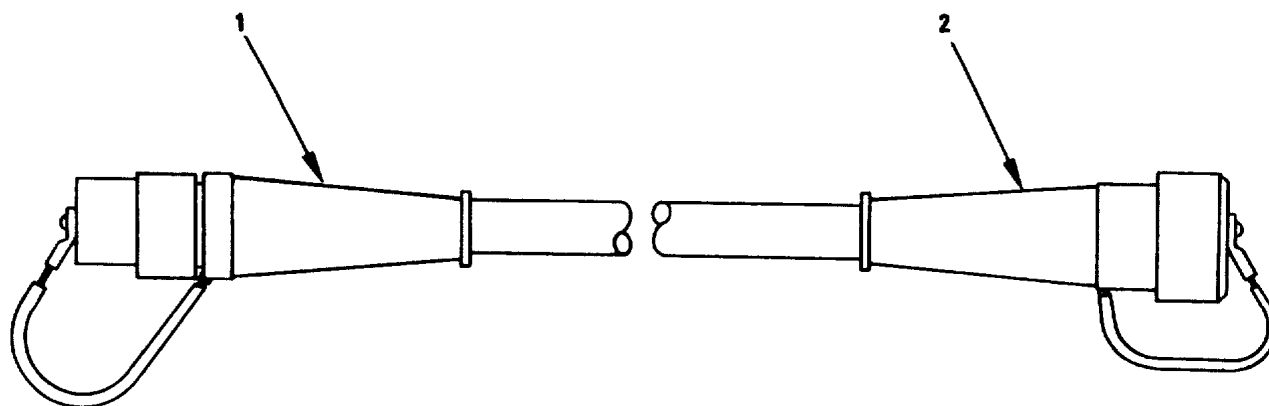


Figure 11. Cable Reel Control Assembly.

EL8VZ012

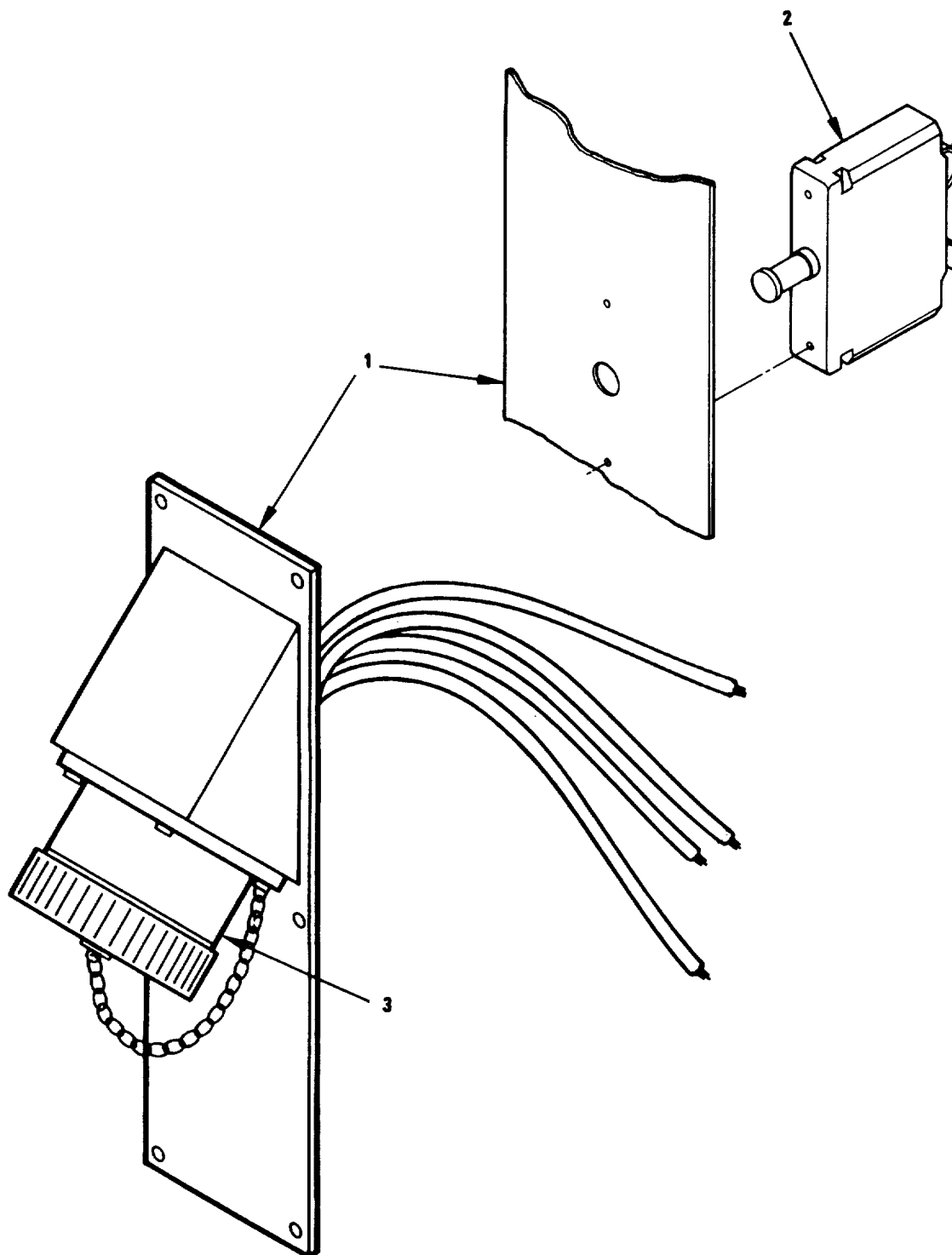
(1) ILLUSTRATION		(2)	(3)	(4)	(5)	(6)	(7)	(8)
(a) FIG NO.	(b) ITEM NO.	SMR CODE	FEDERAL STOCK NUMBER	FSCM	PART NUMBER	DESCRIPTION <i>USABLE ON CODE</i>	U/M	QTY INC IN UNIT
						GROUP 04 CABLE REEL CONTROL ASSEMBLY		
11	1	XBFZZ		80063	B4030264	LID CA RL CONTROL	EA	1
11	2	PAFZZ	5945-00-592-8565	15605	6046HID	RELAY, ELECTROMAGNET.....	EA	1
11	3	XBFZZ		80063	B4030262	BOX CABLE REEL CONT	EA	1
11	4	XBFZZ		80063	B4030263	SPRT CA RL CON T.....	EA	1
11	5	PAFZZ		13172	HP-5SR-A-1	CONNECTOR BLACK	EA	1
11	6	PAFZZ		13172	HP-5SR-A-1	CONNECTOR RED	EA	1
11	7	XBFZZ		56501	842AL	BUSHING.....	EA	1
11	8	PAFZZ	5975-01-058-3838	59730	141AL	LOCKNUT, ELECTRICAL.....	EA	1



EL8VZ013

Figure 12. Power Input Cable Assembly.

(1) ILLUSTRATION		(2)	(3)	(4)	(5)	(6)	(7)	(8)
(a) FIG NO.	(b) ITEM NO.	SMR CODE	FEDERAL STOCK NUMBER	FSCM	PART NUMBER	DESCRIPTION <i>USABLE ON CODE</i>	U/M	QTY INC IN UNIT
12	1	XBFZZ		77820	10-563501-4MP	GROUP 05 POWER INPUT CABLE ASSEMBLY CONNECTOR STR PLUG	EA	1
12	2	XBFZZ		77820	10-563502-4MS	CONNECTOR CA RCPT	EA	1



EL8VZ014

Figure 13. Plate and Connector Assembly.

(1) ILLUSTRATION		(2)	(3)	(4)	(5)	(6)	(7)	(8)
(a) FIG NO.	(b) ITEM NO.	SMR CODE	FEDERAL STOCK NUMBER	FSCM	PART NUMBER	DESCRIPTION <i>USABLE ON CODE</i>	U/M	QTY INC IN UNIT
13	1	XBFZZ		80063	B4030270	GROUP 06 PLATE AND CONNECTOR ASSEMBLY CONNECTOR PLATE..... EA	1	
13	2	PAFZZ	5925-00-271-8822	96906	MS25017-7 1-2	CIRCUIT BREAKER EA	1	
13	3	PAFZZ		77820	10-563500-4MS	CONNECTOR, RECEPTAC EA	1	

SECTION IV

NATIONAL STOCK NUMBER AND PART NUMBER INDEX

TM 11-6110-249-24P

Stock Number	Figure No.	Item No.	Stock Number	Figure No.	Item No.
5925-00-271-8822	13	2	5930-00-809-4841	3	9
5945-00-592-8565	11	2	4210-00-978-2010	1	2
5945-00-660-9315	5	7	5975-01-058-3838	11	8
5120-00-808-5006	1	3			

FSCM	PART NUMBER	FIGURE NO.	ITEM NO.	FSCM	PART NUMBER	FIGURE NO.	ITEM NO.
80063	B4030206	1	5	80063	B4030264	11	1
80063	B4030209	1	1	80063	B4030269	1	6
80063	B4030210	2	3	80063	B4030270	13	1
80063	B4030211	3	4	56996	B430221-01A	5	7
56996	B4030212	3	1	12670	CLE-11001	3	2
56996	B4030213	4	1	01276	FE300140-01	1	7
80063	B4030214	2	2	50603	HBR200AB	5	6
80063	B4030215	5	8	13172	HP-5SR-A-1	11	5
80063	B4030219	5	14	13172	HP-5SR-A-1	11	6
80063	B4030220	5	15	92858	1S0-45-62	10	2
80063	B4030222	5	19	92858	1S0-45-7	10	1
80063	B4030223	5	18	96906	MIL-R-18546	7	1
80063	B4030224	3	8	96906	MS25017-1 1-2	13	2
80063	B4030225	5	21	92858	P56SX006	1	2
80063	B4030226	5	22	55116	SCD MOD 4331	3	3
80063	B4030227	5	23	77820	10-563500-4MS	13	3
80063	B4030228	5	20	77820	10-563501-4MP	12	1
56996	B4030229	4	2	77820	10-563502-4MS	12	2
80063	B4030230	5	4	77820	10-565303-4MP	9	1
56996	B4030232	5	24	59730	141AL	11	8
80063	B4030234	5	10	12670	22997	8	4
80063	B4030236	5	2	15309	266-098	3	7
80063	B4030239	6	3	15309	266-099	3	6
80063	B4030240	6	2	82121	31904 LT	3	9
80063	B4030241	6	1	12670	33-201-002	5	3
80063	B4030242	5	17	71744	39F3466	3	5
80063	B4030243	5	16	75382	40TB-XXP-10	5	5
80063	B4030244	5	13	81567	50 DUROMETER.062	8	1
80063	B4030246	5	12	81567	50.062X36.000 LG	2	1
80063	B4030247	5	11	12670	53A-501-001	5	1
80063	B4030257	8	2	12670	6004W0000	1	3
80063	B4030258	8	3	15605	6046HID	11	2
80063	B4030261	1	4	12610	69-692	8	5
80063	B4030262	11	3	56501	842AL	11	7
80063	B4030263	11	4				

By Order of the Secretary of the Army.

Official:

ROBERT M. JOYCE
Major General, United States Army
The Adjutant General


EDWARD C. MEYER
General, United States Army
Chief of Staff

DISTRIBUTION:

To be distributed in accordance with Special List.

☆U.S. GOVERNMENT PRINTING OFFICE: 1984 0 - 421-302 (10367)

RECOMMENDED CHANGES TO EQUIPMENT TECHNICAL PUBLICATIONS

 <p style="font-style: italic;">THEN...JOT DOWN THE DOPE ABOUT IT ON THIS FORM. CAREFULLY TEAR IT OUT, FOLD IT AND DROP IT IN THE MAIL.</p>		SOMETHING WRONG WITH PUBLICATION		
		FROM: (PRINT YOUR UNIT'S COMPLETE ADDRESS)		
PUBLICATION NUMBER		DATE SENT		
PUBLICATION DATE		PUBLICATION TITLE		
BE EXACT PIN-POINT WHERE IT IS				
PAGE NO.	PARA-GRAPH	FIGURE NO.	TABLE NO.	<p style="font-weight: bold; text-align: center;">IN THIS SPACE, TELL WHAT IS WRONG AND WHAT SHOULD BE DONE ABOUT IT.</p>
PRINTED NAME, GRADE OR TITLE AND TELEPHONE NUMBER			SIGN HERE	

The Metric System and Equivalents

Linear Measure

1 centimeter = 10 millimeters = .39 inch
 1 decimeter = 10 centimeters = 3.94 inches
 1 meter = 10 decimeters = 39.37 inches
 1 dekameter = 10 meters = 32.8 feet
 1 hectometer = 10 dekameters = 328.08 feet
 1 kilometer = 10 hectometers = 3,280.8 feet

Weights

1 centigram = 10 milligrams = .15 grain
 1 decigram = 10 centigrams = 1.54 grains
 1 gram = 10 decigrams = .035 ounce
 1 decagram = 10 grams = .35 ounce
 1 hectogram = 10 decagrams = 3.52 ounces
 1 kilogram = 10 hectograms = 2.2 pounds
 1 quintal = 100 kilograms = 220.46 pounds
 1 metric ton = 10 quintals = 1.1 short tons

Liquid Measure

1 centiliter = 10 milliliters = .34 fl. ounce
 1 deciliter = 10 centiliters = 3.38 fl. ounces
 1 liter = 10 deciliters = 33.81 fl. ounces
 1 dekaliter = 10 liters = 2.64 gallons
 1 hectoliter = 10 dekaliters = 26.42 gallons
 1 kiloliter = 10 hectoliters = 264.18 gallons

Square Measure

1 sq. centimeter = 100 sq. millimeters = .155 sq. inch
 1 sq. decimeter = 100 sq. centimeters = 15.5 sq. inches
 1 sq. meter (centare) = 100 sq. decimeters = 10.76 sq. feet
 1 sq. dekameter (are) = 100 sq. meters = 1,076.4 sq. feet
 1 sq. hectometer (hectare) = 100 sq. dekameters = 2.47 acres
 1 sq. kilometer = 100 sq. hectometers = .386 sq. mile

Cubic Measure

1 cu. centimeter = 1000 cu. millimeters = .06 cu. inch
 1 cu. decimeter = 1000 cu. centimeters = 61.02 cu. inches
 1 cu. meter = 1000 cu. decimeters = 35.31 cu. feet

Approximate Conversion Factors

<i>To change</i>	<i>To</i>	<i>Multiply by</i>	<i>To change</i>	<i>To</i>	<i>Multiply by</i>
inches	centimeters	2.540	ounce-inches	Newton-meters	.007062
feet	meters	.305	centimeters	inches	.394
yards	meters	.914	meters	feet	3.280
miles	kilometers	1.609	meters	yards	1.094
square inches	square centimeters	6.451	kilometers	miles	.621
square feet	square meters	.093	square centimeters	square inches	.155
square yards	square meters	.836	square meters	square feet	10.764
square miles	square kilometers	2.590	square meters	square yards	1.196
acres	square hectometers	.405	square kilometers	square miles	.386
cubic feet	cubic meters	.028	square hectometers	acres	2.471
cubic yards	cubic meters	.765	cubic meters	cubic feet	35.315
fluid ounces	milliliters	29.573	cubic meters	cubic yards	1.308
pints	liters	.473	milliliters	fluid ounces	.034
quarts	liters	.946	liters	pints	2.113
gallons	liters	3.785	liters	quarts	1.057
ounces	grams	28.349	liters	gallons	.264
pounds	kilograms	.454	grams	ounces	.035
short tons	metric tons	.907	kilograms	pounds	2.205
pound-feet	Newton-meters	1.356	metric tons	short tons	1.102
pound-inches	Newton-meters	.11296			

Temperature (Exact)

°F	Fahrenheit temperature	5/9 (after subtracting 32)	Celsius temperature	°C
----	------------------------	----------------------------	---------------------	----

